



XINJIANG ZHONGTAI CHEMICAL (GROUP) CO., LTD.

2011

2012 3

一、报告简介

2011

二、编制依据

GRI

三、时间范围

2011 1 1 2011 12 31

四、发布周期

五、报告范围

六、数据来源

七、指代说明

八、报告获取

www.cninfo.com.cn

www.zthx.com

..... I

..... I

..... 1

..... 1

..... 6

..... 6

..... 8

..... 9

..... 9

..... 10

..... 14

..... 16

..... 18

..... 19

..... 20

..... 21

..... 22

..... 22

..... 23

..... 25

..... 26

..... 28

..... 29

..... 29

..... 30

..... 31

..... 31

..... 32

..... 33

..... 33

..... 34

..... 35

2011

2011

125

2011 4

130

2012

PVC

2011 11

1958

78

2001 12

2006 12 8

PVC

90

65

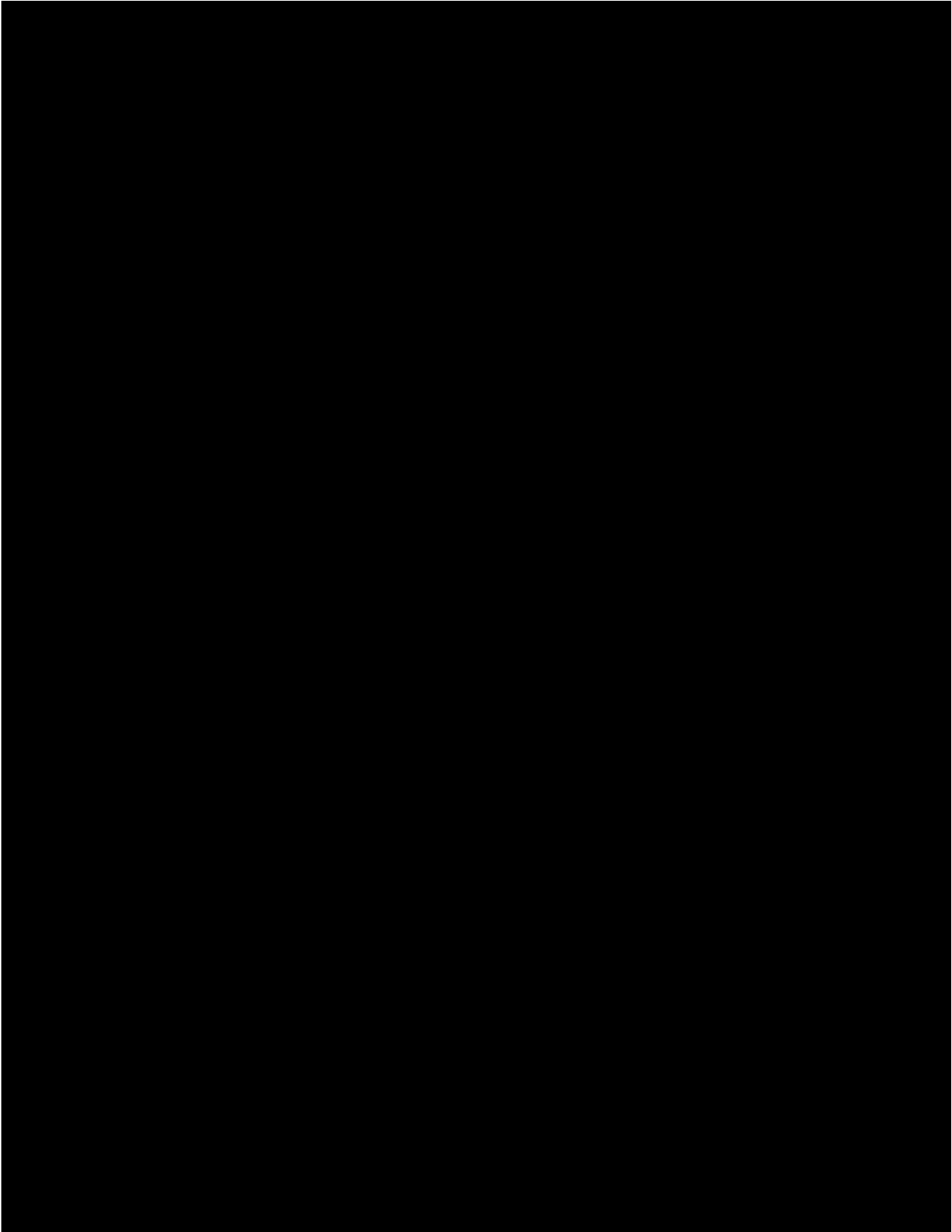
20

“ ”

2011 12 31

11

7



53.57%

13

5

5

2

ISO9001:2008

ISO14000:2004

ISO10012:2003

2

3

4

2/3

2/3

5

6

7

8

9

2010	157,759,800	291,272,638.66	54.16%	646,142,303.54
2009	0	103,130,301.90	0%	393,905,362.02
2008	5,368,600	115,820,350.98	4.64%	363,158,709.50
		%	95.92	



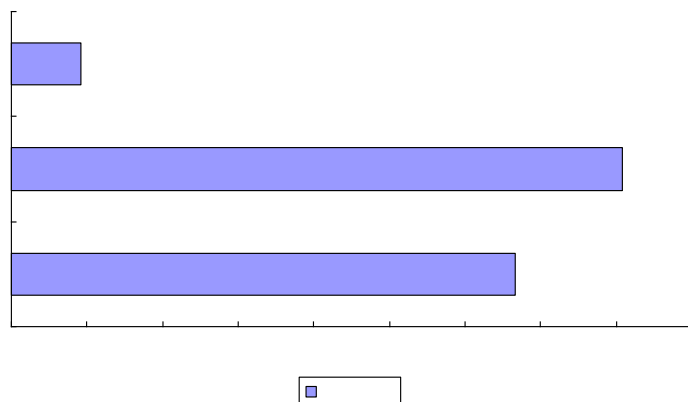
2011 5

QHSE

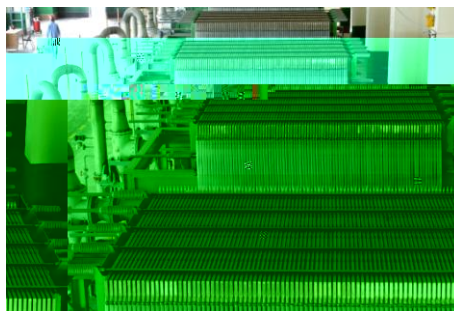
7 19

8 30

QHSE



100kwh/T



+

PGW-Turbo

50%

108m³

0.6

806 m³

COD 1138.7t

2011

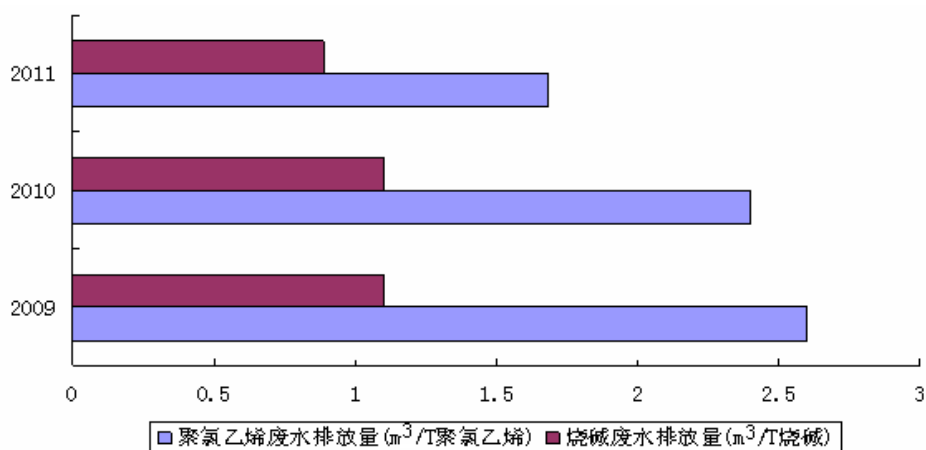
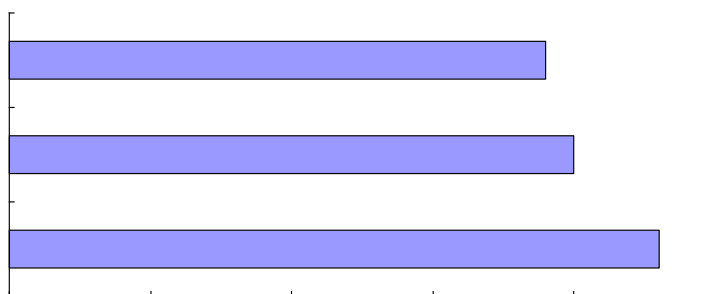
120m³/h

130-150t/h

216

m³

COD 57.6



GB16297-1996

45m

GB9078 1996

GB13223 2011

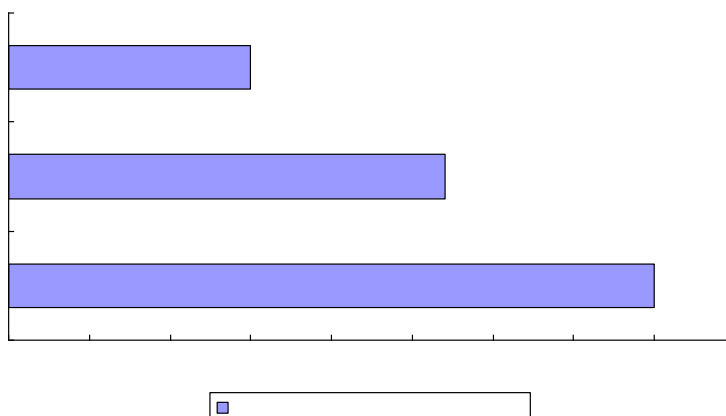
2011

CO₂

CO₂ 315

33.6 m³

kg/t



PVC

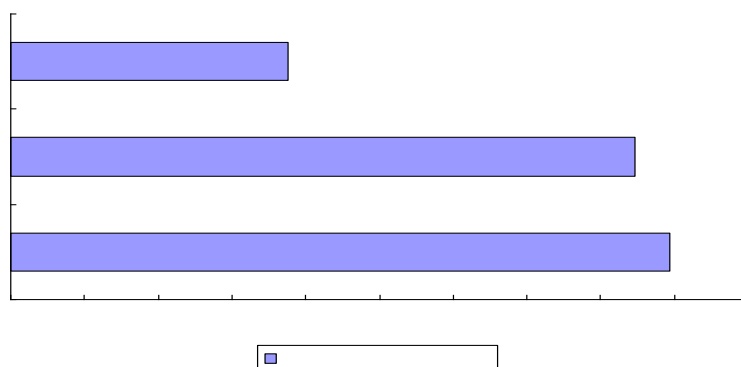
174,584t/a

34.5

90%

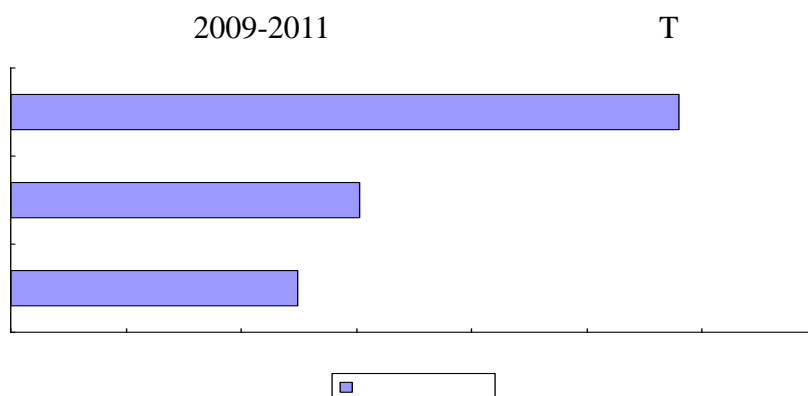
140

16



85%

100%



2009-2011

T

2008 4

2010 9

100

96 / 73 30 21,781
13,663

--	--	--	--	--

400

20

17

8

80 ×120

10

4.2

GB16297

1996

mg/m³

2011

DCS

PVC

kgce/t

				2009		2010		2011	
	350	360	500	334	377	340	380	331	375
	490	510	780	386	485	471			
	750	780	900	755	750	722	685	722	656
	240	260	320	203	246	184	244	185	236

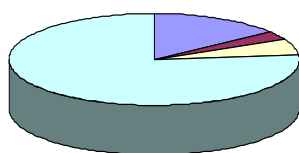
2011 12 31

6,879

2011

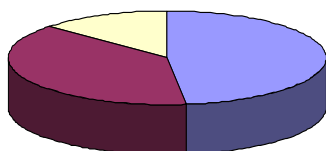
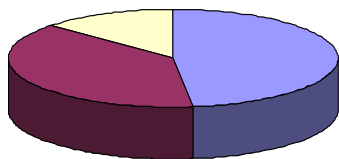
300

205



30

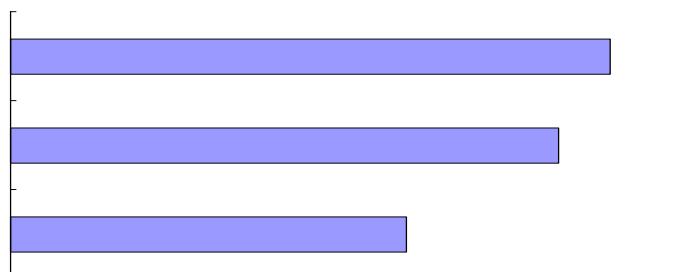
67%



2011

60,809

5,067



2010



2004

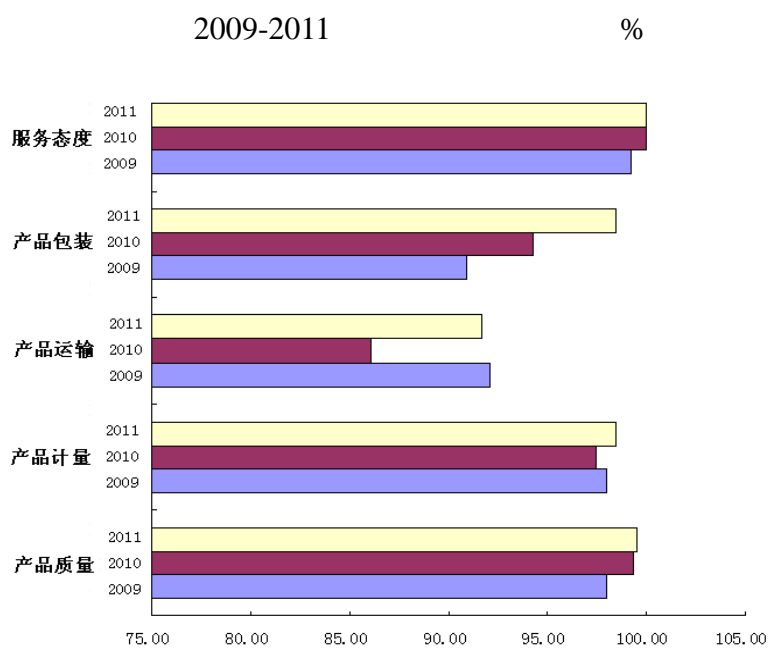
2010

100%

ISO9001

ISO9001

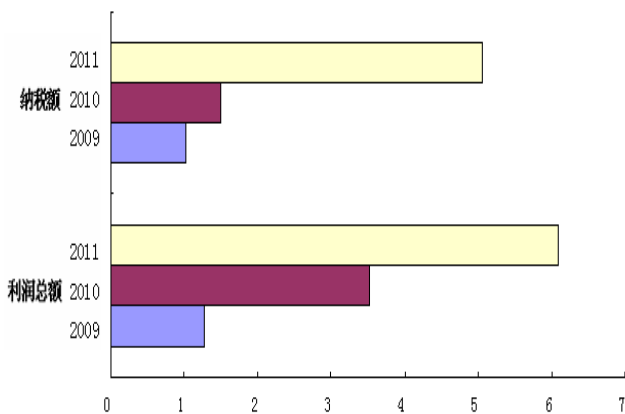
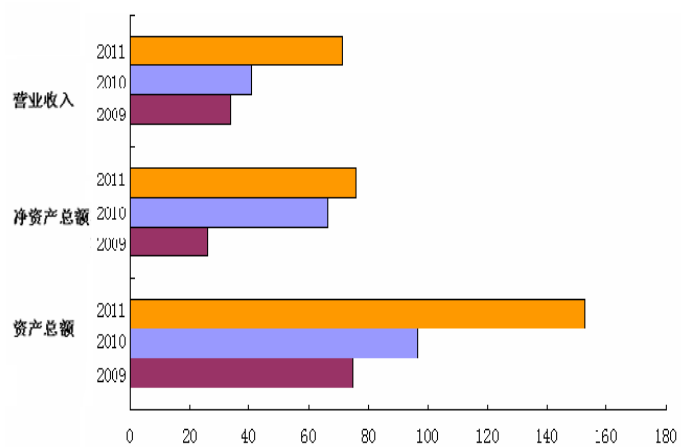
ISO9001



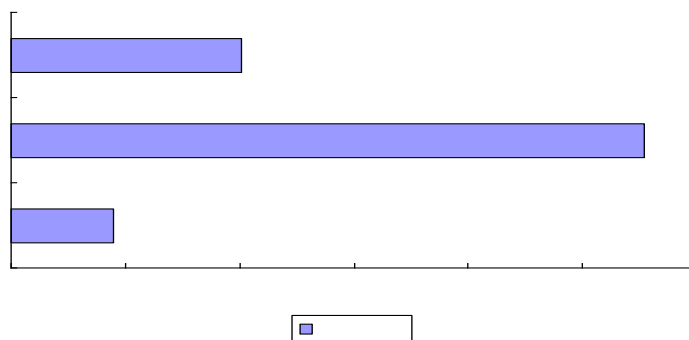
2011

81.99

61.44



2009-2011



2012