



**XINJIANG ZHONGTAI CHEMICAL CO., LTD.**

**2012**

**2013 2**

2012

2012

2012 1 1 2012 12 31

" " "

[www.cninfo.com.cn](http://www.cninfo.com.cn)

[www.zthx.com](http://www.zthx.com)

..... 12

..... 13

..... 17

..... 21

..... 27

..... 28

..... 31

..... 33

..... 33

..... 35

..... 36

2012

" "

" "

2012

89.77

9.49%

67.28

9.51%

71.13

4.43

80

60

90

90

"

"

150

110

2013

"

"

王世平

2013 2 19

2001 166

2001 12 18

PVC

2012 10

1958

78

2001 12

2006 12 8

2012 12

220

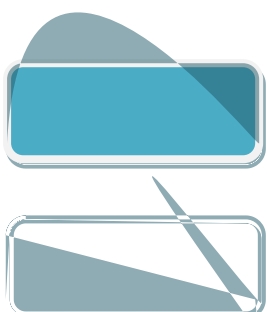
115,434

1.1

150

110

20



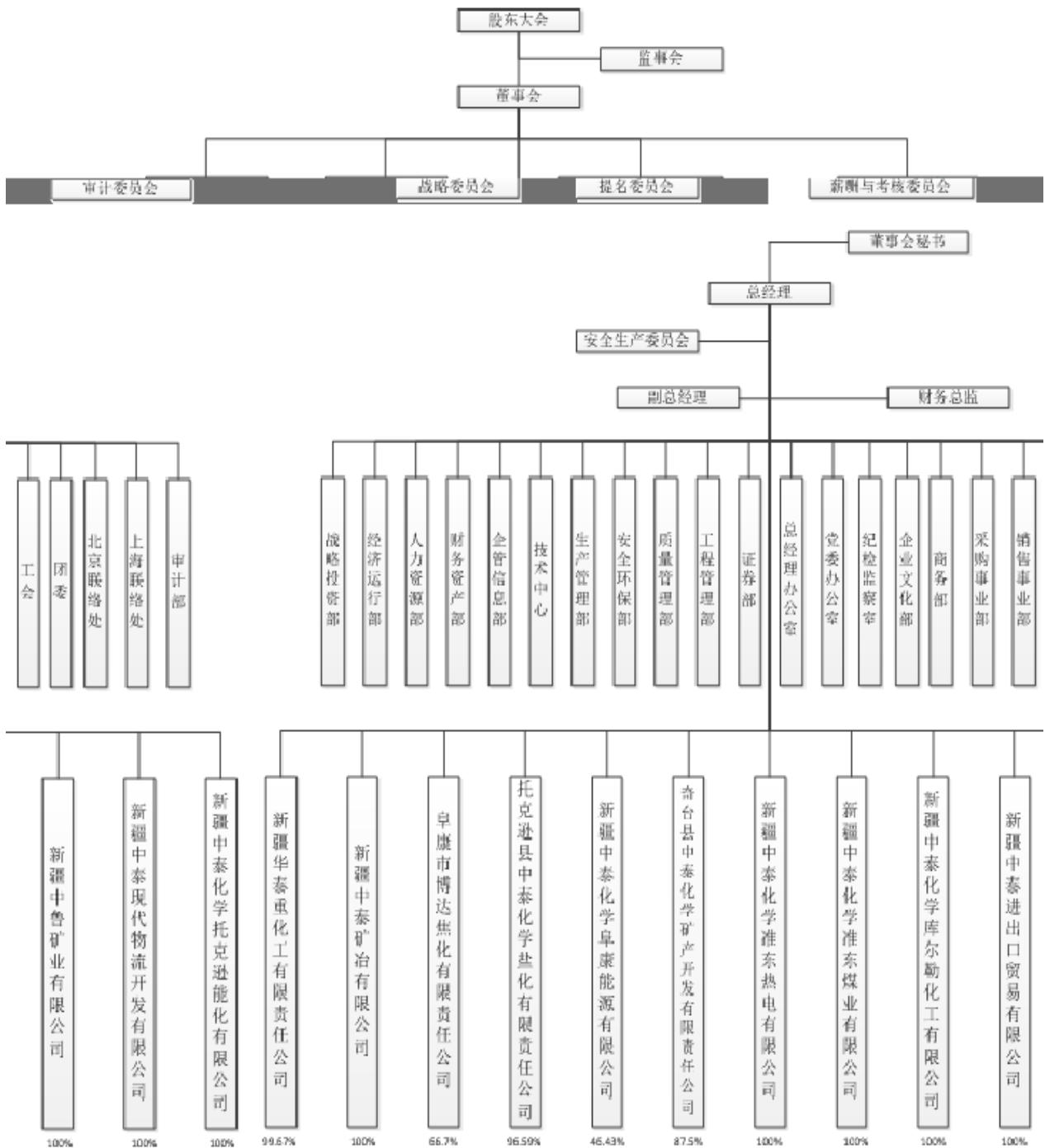
2012

		"
		"

2012 12 31

13

7



1  
2

53.57%



2012 8  
49

2012  
110

2012 400  
40 700

2012 63

<

2012  
2012 -2014

10%  
30%

13 5 2012

"

"

2012 11

86 6 9  
2

5 2 2012 9

26

2011 11 3      2012 11 2      2012 11 5

“ “ “ “

2010

“ “

“ “

“ “



100kwh/T

+

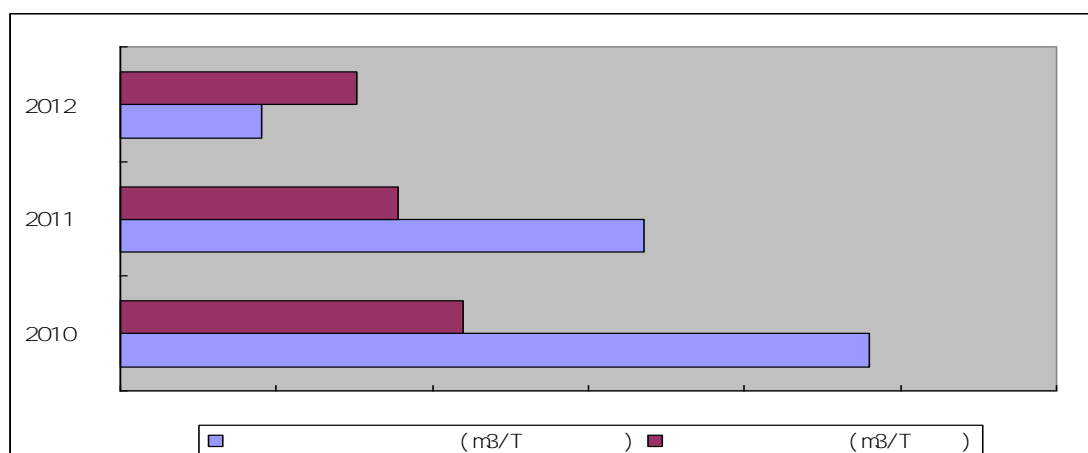
PGW-Turbo

50%

108m<sup>3</sup>

0.6



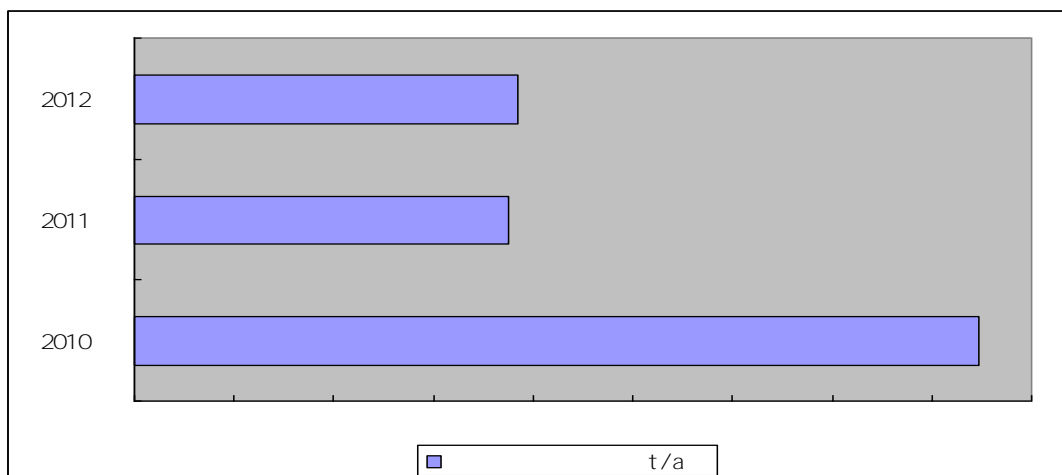
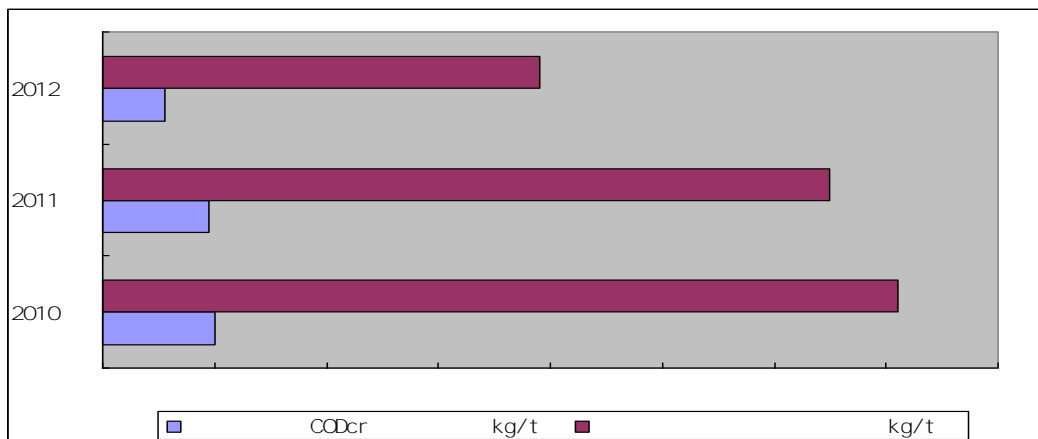


80 ×120

38 m<sup>2</sup>

GB16297-1996

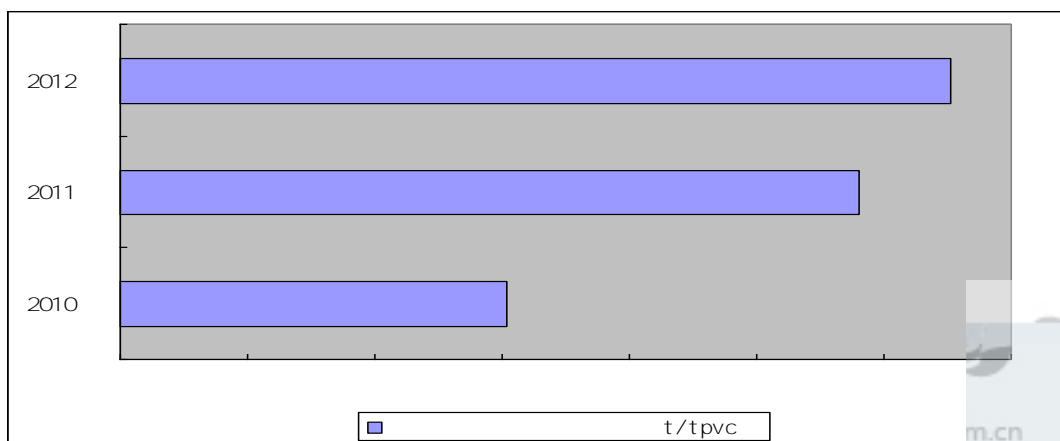
GB13223 2011



85%

2010-2012

T



2012

100%

2008

2012 142,555

——2012

13,320m<sup>3</sup>

——2012

33

74.9m<sup>3</sup>/h

——2012

89.6 m<sup>3</sup>

120 m<sup>3</sup>

COD144



---

258	m <sup>3</sup>	398.9	m <sup>3</sup> /	60,000
	13,169			
2012	9	3,000		
			4,400	500

ISO14000

10 A

40 B

123 C

“ ”

2009

2010

98.25%

10

20

2012

500

39

68

46

15

2012

3,000

"

"

2012

780

"

"

2012

25

2010

" - - "

" "

2011 7

QHSE

2012 1,000

"

"

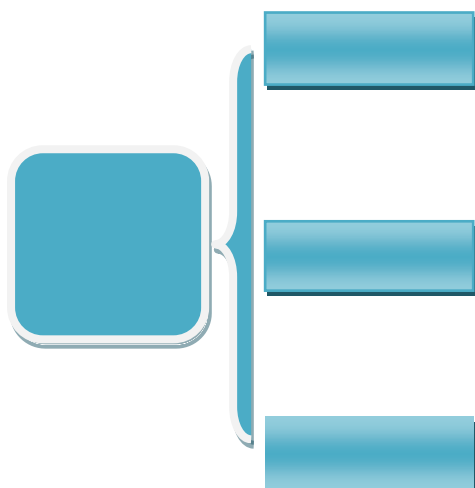
"

"

2012

"

"



2012	16			2012
		2,568.67	4,438.83	35
	2,343.03		50	
	1,773.3			
3,715.462		450		
ESD				

2012

10

5

2012

2012 7

2012 11

2012

" " "  
"  
" "

2012

" "  
" "  
" "

" "

2012

5

5,269

5,112

97.02%

2012

989

		2012			122
3					
				GB18218-2009	
				"	"
3#				HAZOP	
45		212		33	
2012		"	" "	" "	"
					2012
		12,343		163,027	
	12	938		9	1,170



			1	4
	5	75	100	
2010		2012		
	1,100			

100 80  
6,000 2012 8

13

" "

" " 2012  
" "

2012

13,918 400  
169 362 13,387

"

"

2012 14  
8 45 90  
405 43

"

"

100%

"

"

100%

"

"

100% 2012

2011

300

2012

195

100%

2012

2012

5.28

0.69

2012 12 15

2012

5

6

"

"

"

"

"

"



		2012		140
	19	13	16	
11				
2012				
	11			
		2013	4	"
"				
				2012
	100			

2012

2012

36

10

2012

"

"

2012

"

"

2012

"

"

54

2012

"

"

"

"

"

"

100



2012

2012

2012

2012 " 50 "

" 50 "



2010 9 4,200

9 27

3.46

1



268

" "

2012 10

2010 30

2012

2012

2

2012

200

2012

10

2011

100

"

" 2012

20

"

"

"

"

2012

17

"

"

"

"

“ ”

2012

ISO9001

”

”

ISO9001

**2013**

2012

2013

2013

"

"

"

"

“ ”

“ ”

80 90

“ ”

“

”

2013